

Technical data sheet

Product features



Cooking range solid top combined with static electric oven GN 1/1 - 5x burner

Model	SAP Code	00007190
TPF4-610GEM	A group of articles - web	Stoves



- Device type: Combined unit
- Power consumption of the zone 1 [kW]: 5,5
- Power consumption of the zone 2 [kW]: 3,5
- Power consumption of the zone 3 [kW]: 3,5
- Ignition: Electric
- Type of internal part of the appliance 1 (eg oven): Electric
- Type of internal part of the appliance 2 (eg oven): Static with a grill
- Protection of controls: IPX5
- Material: AISI 304 top plate and cladding

SAP Code	00007190	Power consumption of the zone 1 [kW]	5,5
Net Width [mm]	1000	Power consumption of the zone 2 [kW]	3,5
Net Depth [mm]	600	Power consumption of the zone 3 [kW]	3,5
Net Height [mm]	900	Type of internal part of the appliance 1 (eg oven)	Electric
Net Weight [kg]	155.00	Type of internal part of the appliance 2 (eg oven)	Static with a grill
Power electric [kW]	2.620	Width of internal part [mm]	640
Loading	230 V / 1N - 50 Hz	Depth of internal part [mm]	420
Power gas [kW]	23.500	Height of internal part [mm]	350
Type of gas	Natural gas, propane butane	Solid top dimensions [mm x mm]	15
Number of zones	3		

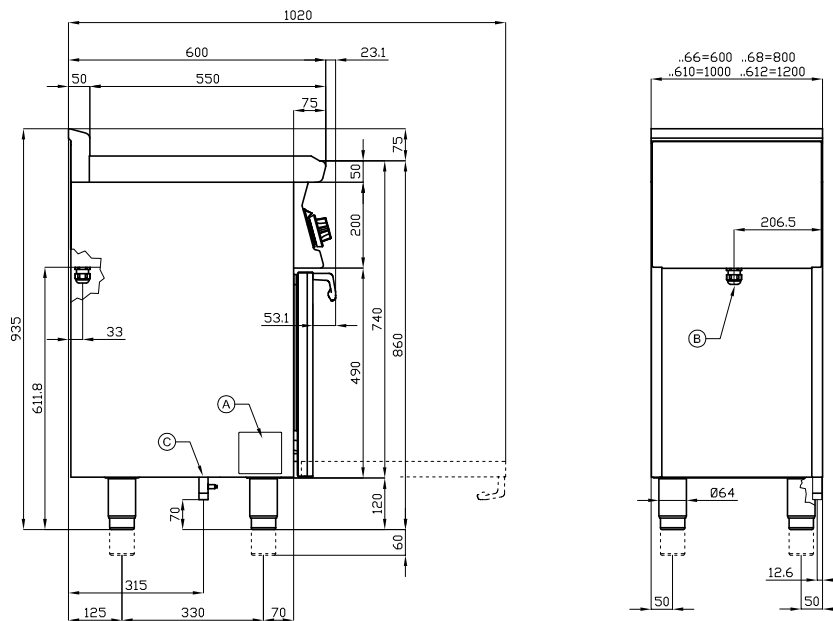
Technical data sheet

Technical drawing



Cooking range solid top combined with static electric oven GN 1/1 - 5x burner

Model	SAP Code	00007190
TPF4-610GEM	A group of articles - web	Stoves



A	Data plate		B	Electrical connection	
C	Gas connection	ISO 7-1 1/2" M			

Technical data sheet

Product benefits



Cooking range solid top combined with static electric oven GN 1/1 - 5x burner

Model	SAP Code	00007190
TPF4-610GEM	A group of articles - web	Stoves

1

Massive construction of burners

- high performance and efficiency
- brass burners removable
- eternal flame
- long life
- demountable
 - energy saving (perfect combustion)
 - time saving for food preparation
 - easy maintenance/cleaning

2

Hygienic moldings of the top plate

- absence of sharp corners and edges (potential places where dirt could stick)
- smooth transitions
 - easy quick cleaning

3

Degree of protection of the control elements IPX5

- maintenance-free system
- resistance to splash water
- long life
 - savings on service interventions
 - easy cleaning and maintenance of equipment

4

All-stainless design

- the material does not cut
- wear resistance of the material
- long life
 - savings on service interventions
 - easy cleaning and maintenance of equipment

5

Safety element – thermocouple

- safe operation for personnel
- there is no overheating and damage to the thallus
- long life
 - savings on service interventions
 - easier and faster operation

6

Large electric oven with four positions for racks with static cooking

- possibility of baking
- high capacity and variability
- all-stainless design
 - suitable for yeast dishes and desserts
 - long service life
 - easy to clean

7

Massive thal

- 15mm material ensures even distribution of heat and heating of the product (heat several pots at the same time at the same temperature)
- material resistance
- long life
 - time saving
 - ease of operation
 - savings on service interventions

Technical data sheet

Technical parameters



Cooking range solid top combined with static electric oven GN 1/1 - 5x burner

Model	SAP Code	00007190
TPF4-610GEM	A group of articles - web	Stoves

1. SAP Code:

00007190

2. Net Width [mm]:

1000

3. Net Depth [mm]:

600

4. Net Height [mm]:

900

5. Net Weight [kg]:

155.00

6. Gross Width [mm]:

1030

7. Gross depth [mm]:

670

8. Gross Height [mm]:

1110

9. Gross Weight [kg]:

165.00

10. Device type:

Combined unit

11. Construction type of device:

With substructure

12. Power electric [kW]:

2.620

13. Loading:

230 V / 1N - 50 Hz

14. Power gas [kW]:

23.500

15. Ignition:

Electric

16. Type of gas:

Natural gas, propane butane

17. Protection of controls:

IPX5

18. Exterior color of the device:

Stainless steel

19. Material:

AISI 304 top plate and cladding

20. Indicators:

operation and warm-up

21. Worktop Thickness [mm]:

1.00

22. Number of zones:

3

23. Power consumption of the zone 1 [kW]:

5,5

24. Power consumption of the zone 2 [kW]:

3,5

25. Power consumption of the zone 3 [kW]:

3,5

26. Number of power control stages:

6

27. Service accessibility:

Trough the frontal panel

28. Safety thermocouple:

Yes

Technical data sheet

Technical parameters



Cooking range solid top combined with static electric oven GN 1/1 - 5x burner

Model	SAP Code	00007190
TPF4-610GEM	A group of articles - web	Stoves

29. Safety thermostat:

Yes

39. Depth of internal part [mm]:

420

30. Safety thermostat up to x ° C:

360

40. Height of internal part [mm]:

350

31. Adjustable feet:

Yes

41. Maximum temperature of the inner chamber [°C]:

300

32. Number of burners/hot plates:

5

42. Minimum temperature of the inner chamber [°C]:

50

33. Type of gas cooking zones:

Thales + Cast iron burners

43. Solid top thickness [mm]:

15

34. Oven Type:

electrical static with grill

44. Solid top dimensions [mm x mm]:

15

35. Oven size:

640 x 420 x 350

45. Solid top material:

chrome-molybdenum

36. Type of internal part of the appliance 1 (eg oven):

Electric

46. Solid top ignition:

Piezo

37. Type of internal part of the appliance 2 (eg oven):

Static with a grill

47. Connection to a ball valve:

1/2

38. Width of internal part [mm]:

640

48. Cross-section of conductors CU [mm²]:

0,75